



/

-
-
-
-

o

-
-
-
-

o



/

-



/

/

/

/

/

/

/

/

= 25 ; l

/

/

o

/

/

/

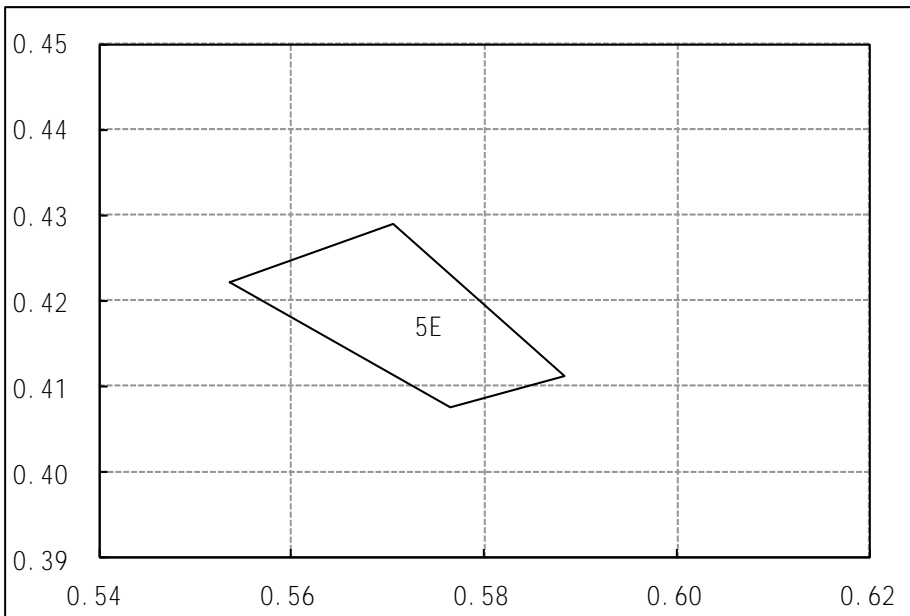
/

/

/ = 25 ; l

/ = 25 ; l

/ = 25 ; l

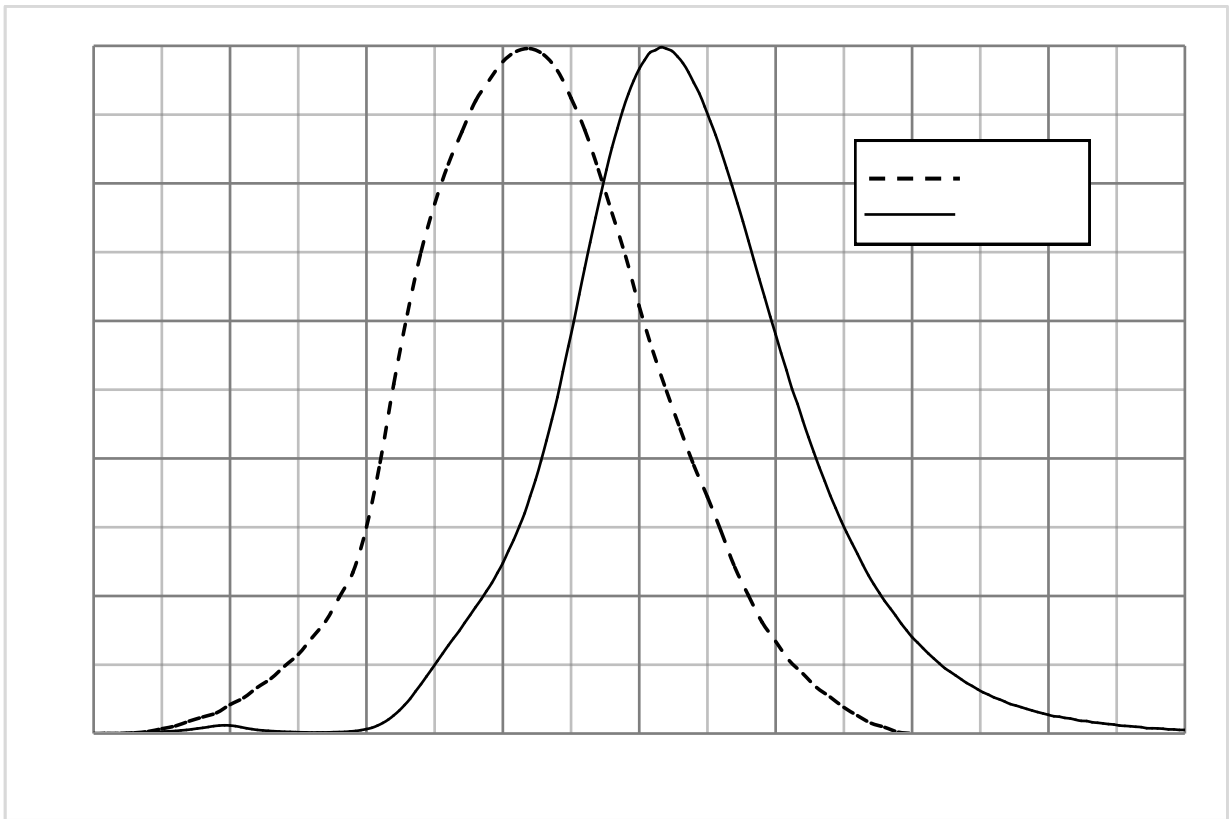


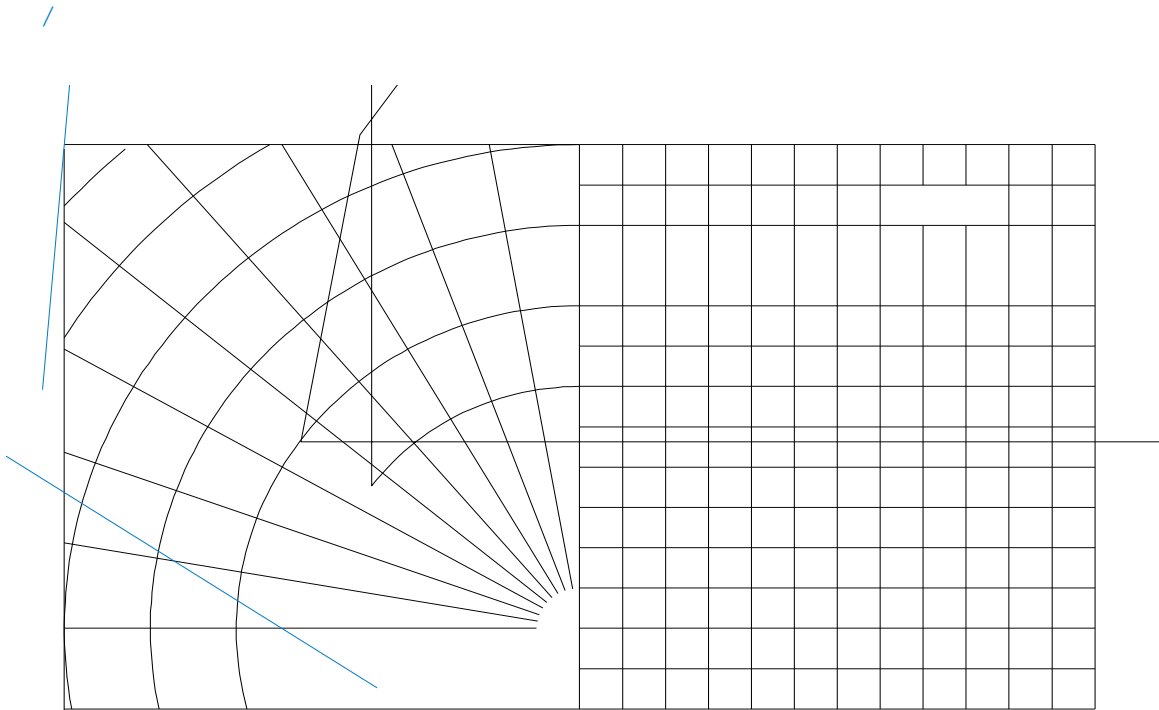
| 5E | |
|--------|--------|
| X | Y |
| 0.5536 | 0.4221 |
| 0.5705 | 0.4289 |
| 0.5764 | 0.4075 |
| 0.5883 | 0.4111 |

/

/

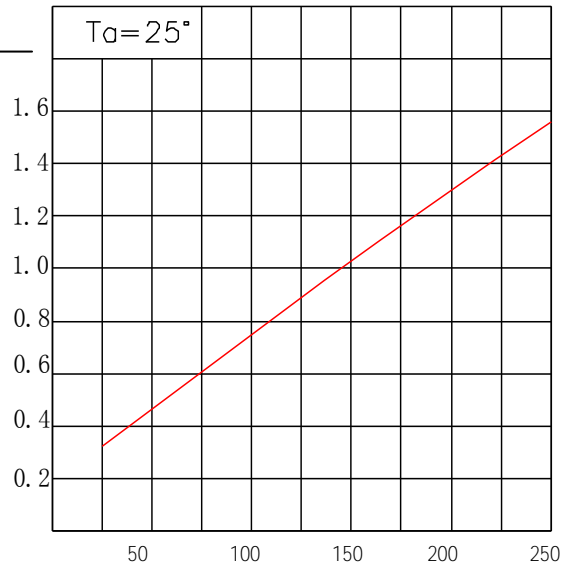
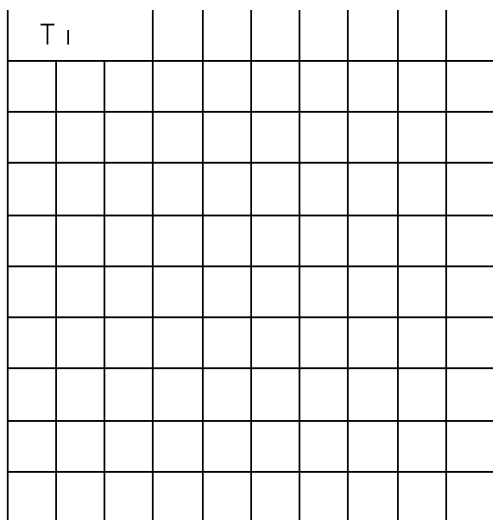
= 25 ; l



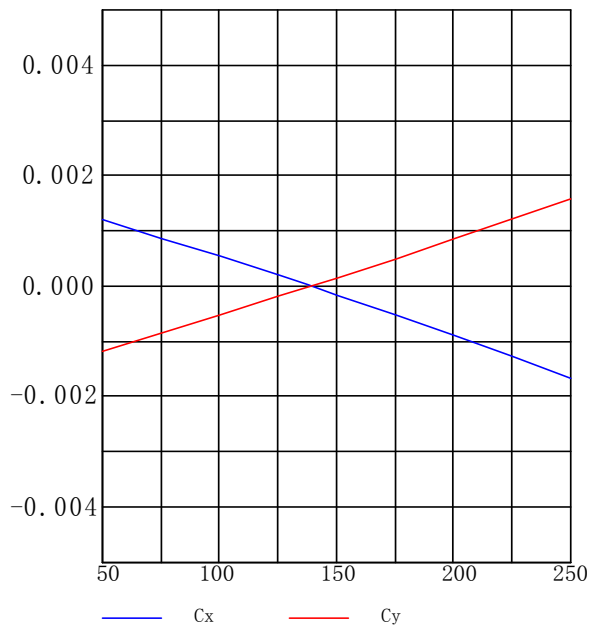


/
= 25

/
= 25

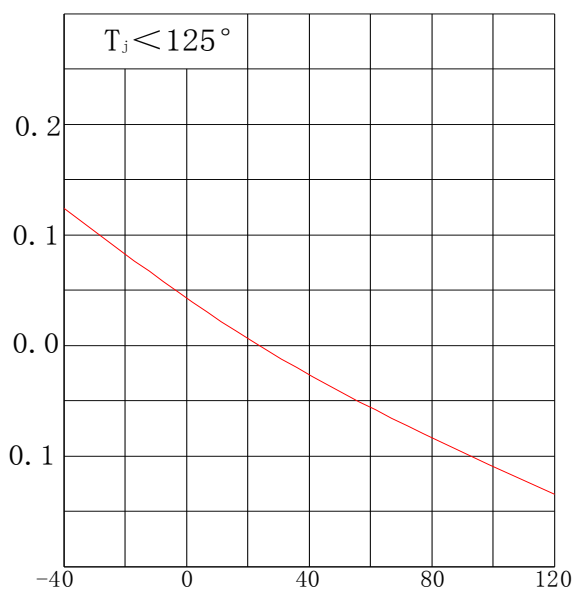


/



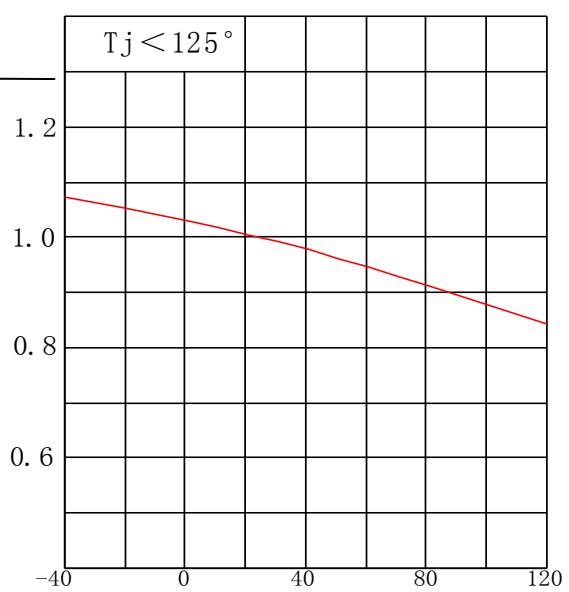
/

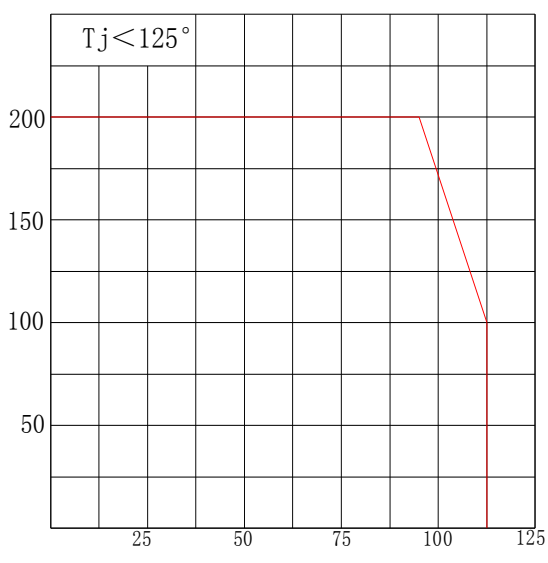
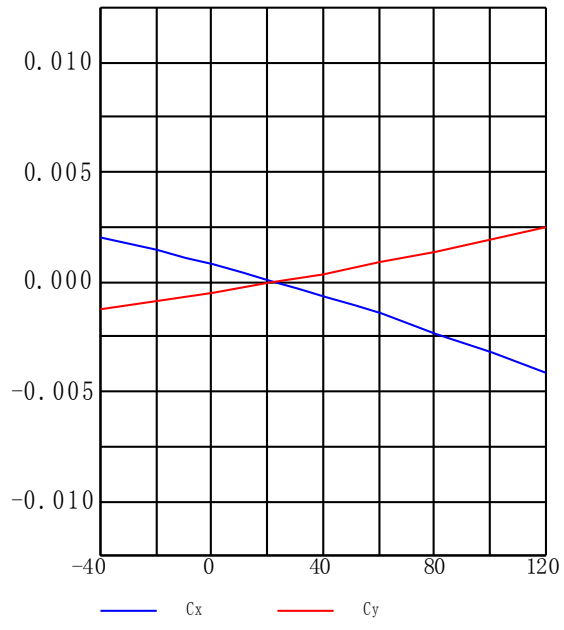
$$(25) = f(T)$$

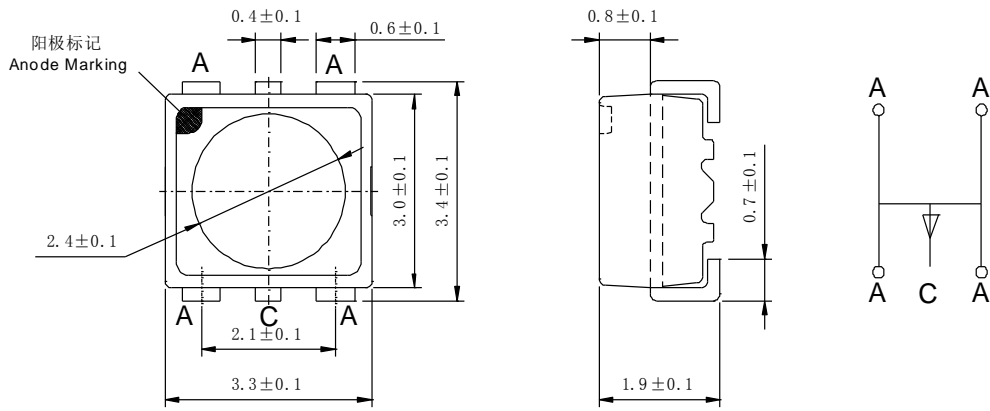


/

$$(25) = f(T)$$



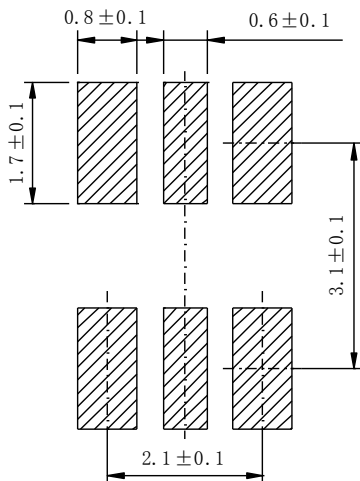


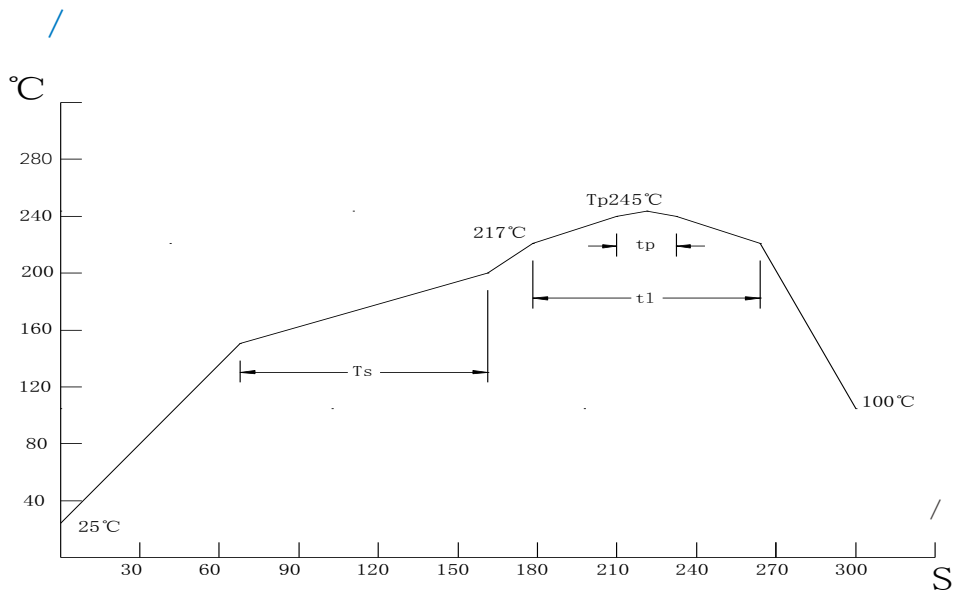


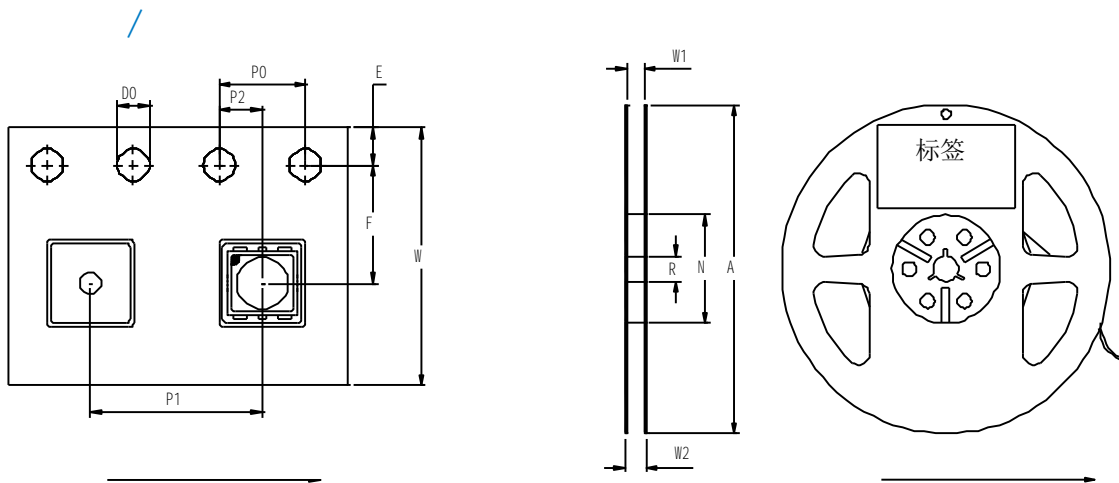
40 /90% R.H, 15ppm ()
 : 25 /75 % R.H, 500
 () 4

40 /90% R.H

mixed gas test: 25 /75 % R.H, 500hours



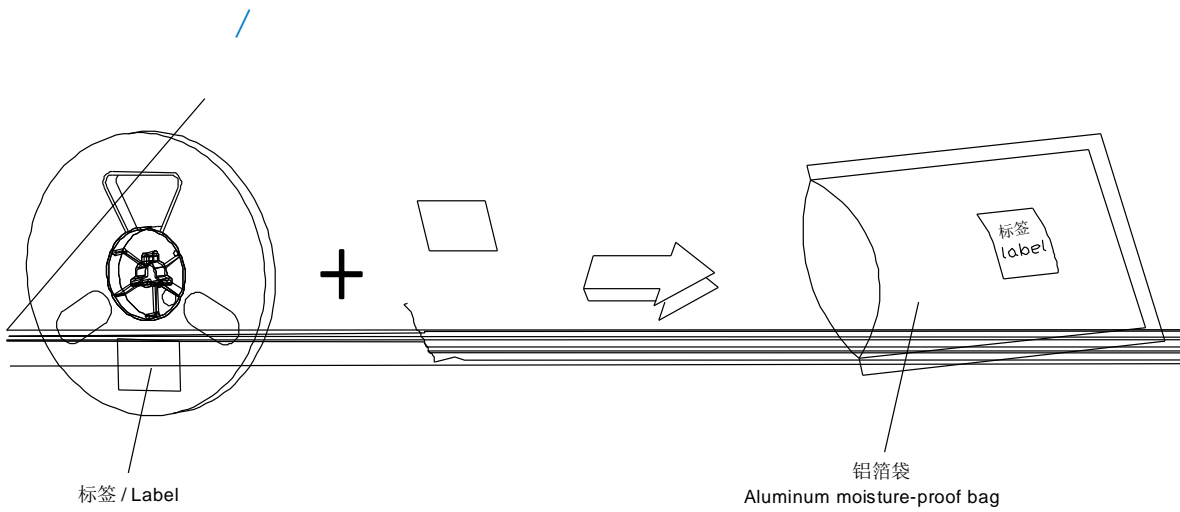


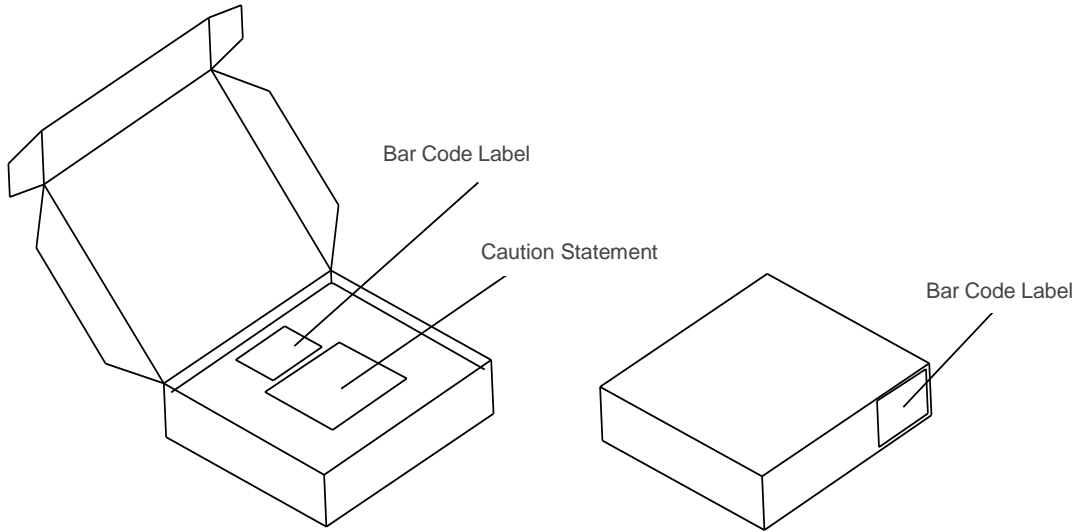


;

± ± ± ± ± ± ±

± ± ± ±





/

/

/

±
±

±
±

±
±

$\pm 0.1 \text{ mm}$

\pm

\pm

\pm

\pm

\pm

\pm

with an internal reproducibility of $\pm 0.05 \text{ V}$ and an expanded uncertainty of $\pm 0.1 \text{ V}$ (acc. to

pulse of typically 25 ms , with an internal reproducibility of ± 0.005 and an expanded uncertainty of ± 0.01 (acc. to GUM with a coverage factor of $k = 3$).

with an internal reproducibility of $\pm 8\%$ and an expanded uncertainty of $\pm 11\%$ (acc. to GUM